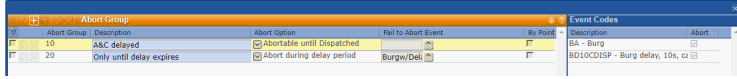


Abort Group

Last Modified on 10/26/2023 1:21 pm EDT

Abort Groups are used to cancel an Alarm. ([Setup > Alarm Processing Setup > Abort Group](#))



There are two options for the Abort Group: Abortable until Dispatched and Abort During Delay.

The Abortable until Dispatched option will cause the Abort Event to cancel the Alarm at any time. If another Signal comes in on the device, the Abort will no longer apply. This can be used for Fail to Area & Open/Close Events. The Fail Open/Close Event will generate an Alarm, but the standard Open/Close Event can abort the Alarm.

The Abort During Delay option is used when the Abort Group Events have a delay set up on the Event Code. If the Abort Event is received before the delay period, the Alarm will never be generated. The Events will still log into History. This can be used for Points with a Restore. The initial trip on the Point can be delayed for a period of time. The Restore Event can be set up as the Abort. If the Restore Event is received during the delay, the Alarm will be canceled before entering a queue.

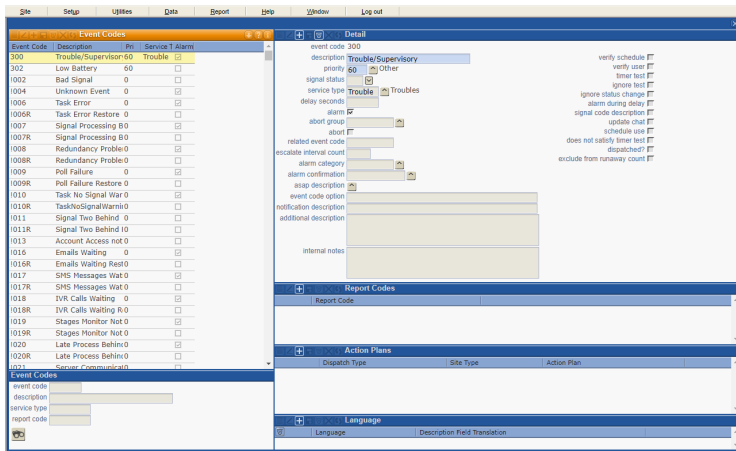
A Stages Option 'Disallow Abort if Operator Accessed' (under the Dispatch tab) can be set to make an accessed Alarm unable to be aborted. This will apply to both the Abortable until Dispatched and Abort During Delay options and prevent the Fail to Abort Event from being logged when the account has been accessed by an Operator.

The Fail to Abort Event can be entered to log an Event if the Abort Event is not received within the delay. Fail to Abort only works with the Abort During Delay option. Fail to Abort processing can be used to log an Event or create an Alarm when the original Event was not an Alarm.

The 'By Point' option can be applied to require that the Abort Event is received on the same Point as the Abortable Event.

[Event Codes](#) are assigned to Abort Groups via the Event Code Detail pane ([Setup > Alarm Processing Setup > Event Code](#)).

For Event Codes that are to be aborted, select the Abort Group from the drop down list. For Event Codes that abort the other Event Codes, select the Abort Group from the drop down list and mark the Event Code as the Abort.



Event Codes can also be entered into an Abort Group through an Auto Process. The Auto Process can be filtered to only apply to selected Site Types, Dispatch Types, Site Groups or a combination of the three.

Aborts can also be defined in [Event Rules](#). Event Rules have more flexibility for assigning Event Codes and can be limited by criteria like Site Type, Site Group, etc. Event Rules were implemented after Abort Groups and are the preferred method going forward.