

Action Module

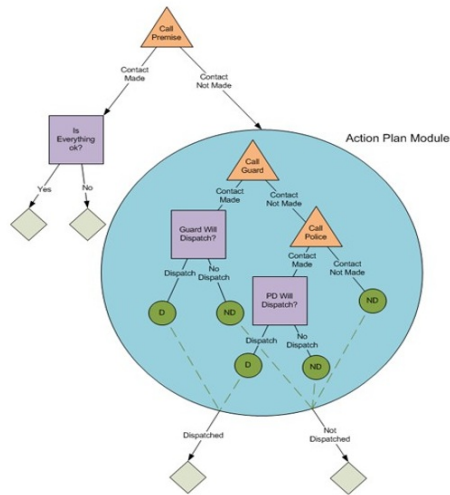
Last Modified on 09/26/2022 5:24 pm EDT

[stages® Documentation - Home](#)

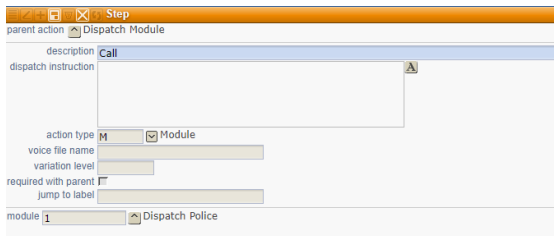
Action Module

Action Modules enable commonly used series of [Action Plan Steps](#) to be set up in a global library of Modules that can be referenced in [Action Plans](#). The Modules are set up as a "mini action plan" with a series of steps leading to outcomes that will snap back into the Action Plan. Using Modules reduces the number of steps in the Action Plan by combining similar branches of steps into one branch.

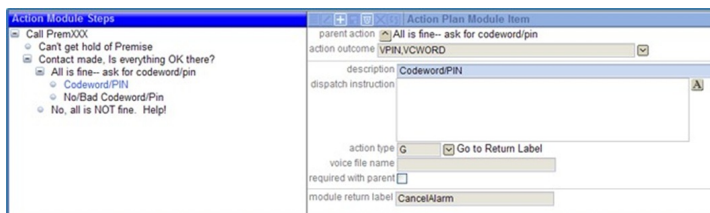
In the example (below), 2 outcomes of 'Dispatched' are combined into one branch and 3 outcomes of 'Not Dispatched' are combined into one branch.



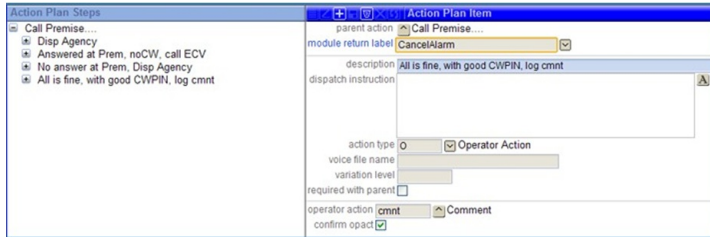
In the Action Plan setup, a Module is entered by selecting the Module (M) Action Type. A Module is then selected.



The Modules are set up with steps similar to Action Plans. The branches of the step tree end in either a 'Go to Return Label' (G) type step or a Full Clear. The G type step is assigned a value for Module Return Label.



In the Action Plan, the children steps of the M type step are assigned to a Module Return Label.



The module will be followed seamlessly by the operator. In the tree structure for the Step Navigator, M type steps will branch into the module steps and the possible outcomes of the module. The outcomes display with the Module Return Label in front of the Step Description grayed and italicized. The G type steps in the module display the Module Return Label at the end grayed and in parentheses.

In the example (left), if a codeword/PIN is matched, the 'CancelAlarm' return label will be the executed and the operator will be prompted with the action dialog for the 'All is fine, with a good CWPIN, log cmnt' step and if a codeword/PIN is not matched, then 'the No/Bad Codeword/PIN' path will be followed to the 'Answered at Prem, noCW, call ECV' step.