

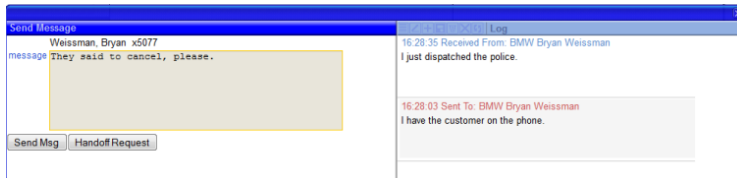
# Dispatch Message

Last Modified on 10/04/2022 11:40 am EDT

[stages@ Documentation - Home](#)

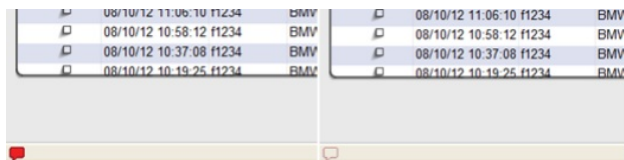
## Dispatch Message

Only one operator can have an account [locked](#) for dispatch. If another operator accesses an already locked account, they can send a message to the operator with the lock.



The [Send Message](#) window will pop open on the operator with the dispatch lock. Sent to and received messages are displayed differently in the Log. A Handoff can be requested to transfer the dispatch lock.

Messages are logged into History with the Operator Action 'msg'. If operator messages should be hidden from history, the operator action can be assigned a Report Code to suppress it from displaying.



Additionally, a red message icon will flash in the bottom left of the Status Bar. Clicking on the icon will focus on the Send Message window, even if it is hidden by other windows.