

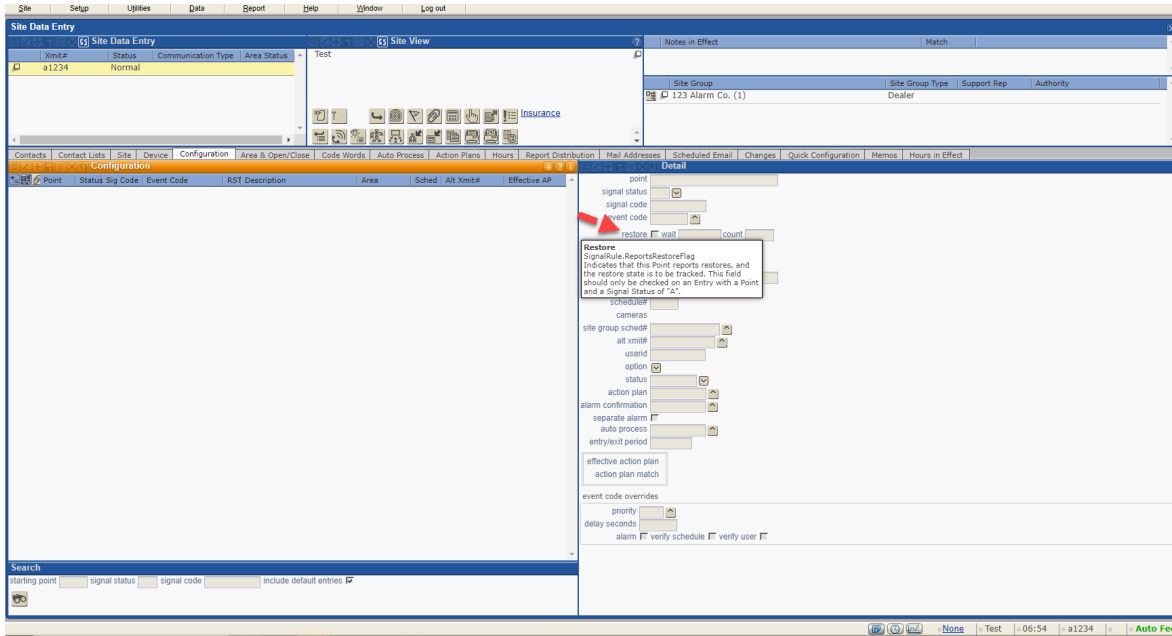
Restoral (RST)

Last Modified on 06/14/2023 11:26 am EDT

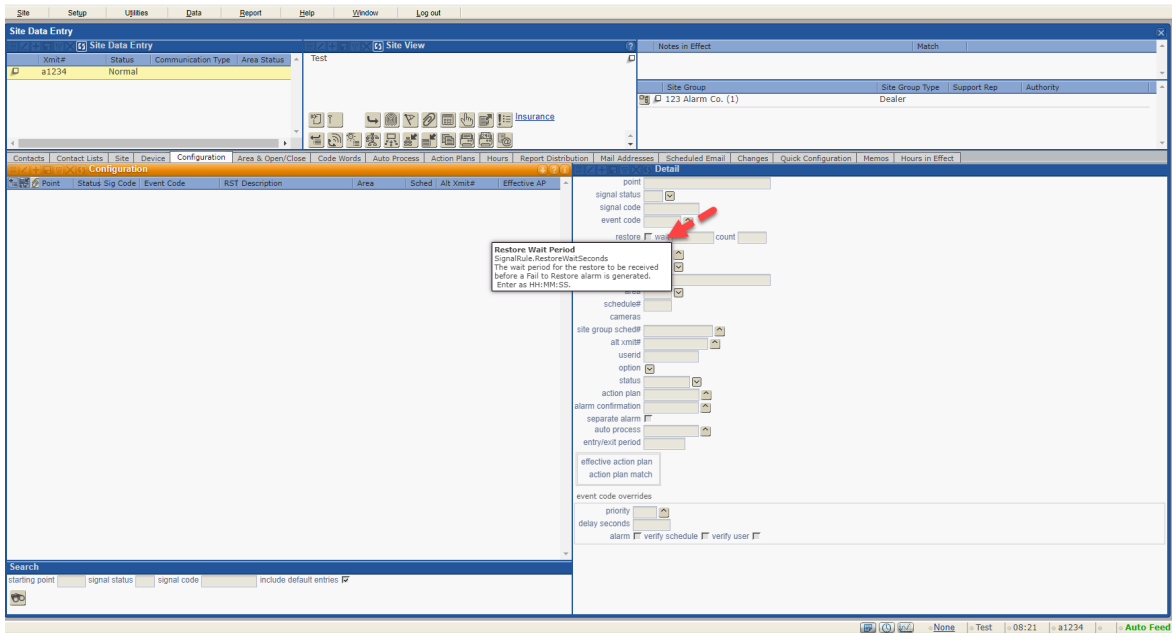
[stages® Documentation - Home](#)

Restoral (RST)

The Restore Flag indicates that the point reports restores and the Restore state is tracked. Only use if the entry contains a point and the signal status is an 'A' (alarm).



The Restore Wait minutes can be entered (default is 20 minutes) and the Count of how many times the restore expected event will be set up.



Site Setup Utilities Data Report Help Window Log out

Site Data Entry Site Data Entry Site View Notes in Effect Match

Xmit#	Status	Communication Type	Area Status
a1234	Normal		

Test

Insurance

Site Group	Site Group Type	Support Rep	Authority
123 Alarm Co. (1)	Dealer		

Contacts | Contact Lists | Site | Device | Configuration | Area & Open/Close | Code Words | Auto Process | Action Plans | Hours | Report Distribution | Mail Addresses | Scheduled Email | Changes | Quick Configuration | Memos | Hours in Effect

Point Status Sig Code Event Code RST Description Area Sched Alt Xmit# Effective AP

Restore Wait Count
SignalRule.RestoreWaitCount
The number of times the Fail to Restore alarm will be generated.

point
signal status
signal code
event code
restore wait count
area
schedule#
cameras
site group sched#
all xmit#
userid
option
status
action plan
alarm confirmation
separate alarm
auto process
entry/text period
effective action plan
action plan match
event code overrides
priority
delay seconds
alarm verify schedule verify user

Search
Starting point signal status signal code include default entries

None | Test | 08:22 | a1234 | Auto Fee