



# Stages and Media Gateway

May 2026



## Contents

Introduction .....	2
Implementation Notes.....	2
Requirements.....	2
Connect Environment Configuration .....	2
Operating System .....	2
Required Linux Packages .....	2
Additional Dependencies .....	3
Media Gateway Configuration .....	3
TCP/IP Settings .....	3
Configuration Settings .....	3
Firewall Policy.....	3
stages™ Environment Configuration.....	4
Step 1 — Create the Task Type.....	4
Step 2 — Create the Task.....	4
Step 3 — Verify Required Stored Procedures .....	5

## Introduction

This guide describes how to integrate your active stages™ environment with Bold Media Gateway. Follow each section to ensure a successful deployment.

## Implementation Notes

This integration supports email attachments up to 10 MB in size. Attachments exceeding this limit will not be processed.

## Requirements

Before beginning the integration, confirm that the following components are in place:

- A fully functioning stages™ environment
- A fully functioning Connect appliance pair; each appliance must be CentOS 7 or later.
- A fully functioning Bold Media Gateway deployment
- A CIFS share which can be reached from the Connect appliance pair that includes these:
  - Username and password for the share
  - CIFS server hostname
  - CIFS share name

## Connect Environment Configuration

Perform the following steps on each Connect appliance in the pair:

### Operating System

Verify that each appliance is running CentOS 7.x or later:

```
cat /etc/redhat-release
```

### Required Linux Packages

Install the following packages using dnf:

```
dnf install cifs-utils cifs-utils-devel libuuid libuuid-devel
```

## Additional Dependencies

Confirm that libsmpp34 is installed on the appliance.

Confirm that commtask version 1.99bd or later is installed. This does not need to be the system-wide ("global") version.

## Media Gateway Configuration

Make the following configuration changes inside the Media Gateway application:

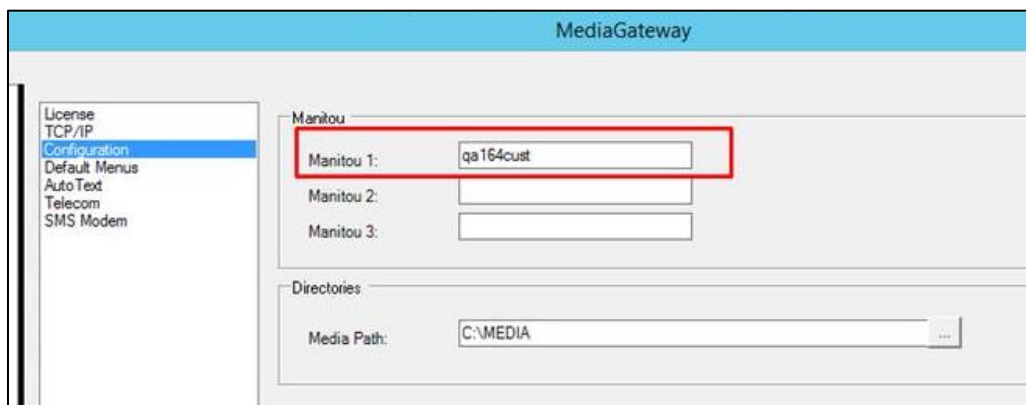
### TCP/IP Settings

1. Navigate to: MediaGateway → Administration → Options → TCP/IP.
2. Confirm that the FEP Port is set to the appropriate value.

### Configuration Settings

1. Navigate to: MediaGateway → Administration → Options → Configuration
2. Set the "Manitou 1" field to localhost (for stand-alone deployments).

**Note:** Although the configuration fields are labelled "Manitou", these settings apply to stages™.



## Firewall Policy

On the server hosting Media Gateway, ensure your firewall allows inbound TCP connections on the port configured as the FEP Port.

## stages™ Environment Configuration

Complete the following three steps in the stages™ application.

### Step 1 – Create the Task Type

1. Navigate to: Utilities → Processing → Task Types
2. Click the "+" button to add a new task type.
3. Set the Task Type field to exactly: BoldMG
4. Set the Description field to: Bold Media Gateway
5. If applicable, select the Account Format checkbox.
6. Save the new task type.

**Note: The Task Type value must be entered as BoldMG (case-sensitive). If this value is incorrect, commtask will not match the task and the integration will not function.**

### Step 2 – Create the Task

1. Navigate to: Utilities → Processing → Tasks → Setup tab
2. Click the "+" button to add a new task.
3. Enter a Task Number, select the BoldMG Task Type, enter a Task Description, and click Save.
4. Double-click the new task to open it for editing.
5. Configure the task fields as follows:
6. Service Name: select the relevant Connect appliance pair
7. Trailing Character (hex): 03
8. Poll Method: Receiver sends poll, SGS responds
9. Poll Message: <Heartbeat/>
10. Poll Response (hex): 3C41636B3E20
11. Comm. Method: TCPIPS
12. Task IP Address: the IP address of the Bold Media Gateway server
13. IP Port #: 6112 (or whichever port Bold Media Gateway is configured on)
14. User Name / Password: credentials used to mount the CIFS share

Set the Option field with the following key-value pairs:

```
[CTVER|1.99bd] [CIFSSRV|<hostname of the CIFS server>] [CIFSSHR|<name of the CIFS share>]
```

**Note:** CTVER is only required if your environment needs to enforce a minimum commtask version. Set it to 1.99bd or later.

### **Step 3 – Verify Required Stored Procedures**

Confirm that the following stored procedures exist in your stages™ database at the minimum required versions:

Stored Procedure Name	Minimum Required Version
pSigBoldXML	7927
pSigProcSig	7729
fXMLGetField	6944

If any stored procedure is below the listed version, contact Bold Group support before proceeding.